



The potential for communities to deliver Net Zero

Ben Dodd: Director of Green Fox Community Energy Co-operative

What is Community Energy

Delivered by not-for-profit organisations such as Co-operatives and Community Benefit Societies, community energy covers aspects of **collective action to reduce, purchase, manage and generate energy**, delivering tangible reductions in green house gas emissions.

Community energy projects have an emphasis on:

- **local engagement**
- **local leadership and control**
- **local community benefiting collectively from the outcomes**

Projects are often achieved through partnerships with commercial or public sector partners.

Capital for the projects are typically raised through a public share offer, with investors becoming the Members of the democratic organisation.

Community Energy Examples– all about people and locality



Fair Energy in Wales



Chesterfield



Donside Hydro,
Aberdeen



Springbok Co-op
Biomass



Assel Valley Scotland



Energise South



Plymouth Community
Energy



Bath and West
Community Energy

Leicestershire

Local organisations delivering community energy projects

Together raising over £1 million in community shares



Harborough Energy

- Established in 2015
- Community Benefit Society
- Installed 170kW of community owned solar PV
- It is the largest community energy solar PV project in Leicestershire



Green Fox Community Energy Co-operative

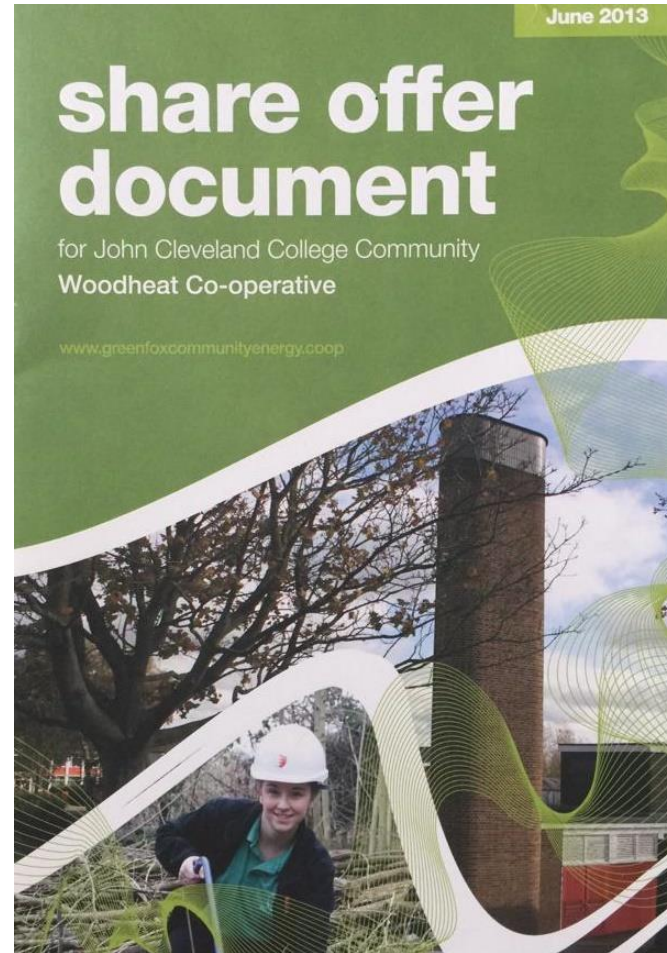
- Established in 2012
- Co-operative
- Installed a community owned 800kW biomass boiler at a local secondary school
- It is the largest community energy heat project in the UK

Share Offer

Through the share offer the co-operative raised £600,000 and 200 people invested and became Members

The majority of Members are from Leicester and Leicestershire

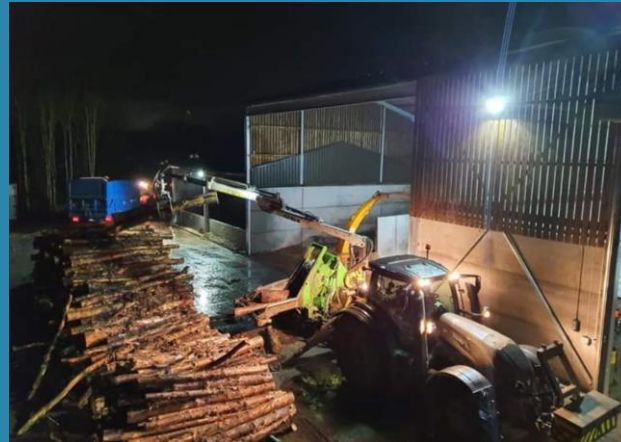
In 2015 Green Fox issued a further share offer for the school and raised £265,000 in 15 days.



Working in Partnership

In 2018 Green Fox Community Energy Co-operative worked in partnership with Milner Forestry and secured a European grant to establish a wood processing plant within the National Forest.

- Last year the plant processed 7,000 tonnes of wood from the National Forest
- Currently employs 4 local people
- Supplies the school with woodchip



Rural Electric Car Clubs

run by the community for the community

2020

Feasibility study for an electric car club in Hungarton in the district of Harborough; supported by the RCEF and Harborough District Council

2021

Surveys went out to 182 parish councils. 40 parish councils responded positively – currently working with 24

2022

Green Fox secured funding from Motability and are taking part in an eighteen-month national pilot. Green Fox facilitates the car club for the community.

2023

As part of this pilot, the first electric car club in Leicestershire will be launched at Tilton on the Hill





Roll out of rural electric car clubs and electric charge points (EVCP)

Market Failure

- Rural electric car clubs are not commercially viable – as it is deemed there are not enough people to use them which is like many rural bus services
- Installing EVCPs in rural locations is also seen as not commercially viable for the same reason
- Resulting in rural areas with little or no public transport and left behind in the transition to electric transport

Solution

- Rural communities having ownership of their own transport needs through electric car clubs
- Installing fast EVCPs alongside the clubs in partnership with District Councils and Leicestershire County Council



Tilton on the Hill Electric Car Club

Launched in May 2023 delivering:

- Four new designated parking spaces
- Two 22kW chargers installed (four connections available)
- Two electric cars, each with over a 200-mile range
- Technical support for the community

Leicestershire CAN

(Collaboration to Accelerate Net zero)

Recognition of an uncoordinated approach

The project presents an opportunity to develop a cohesive structure between local authority and other sectors

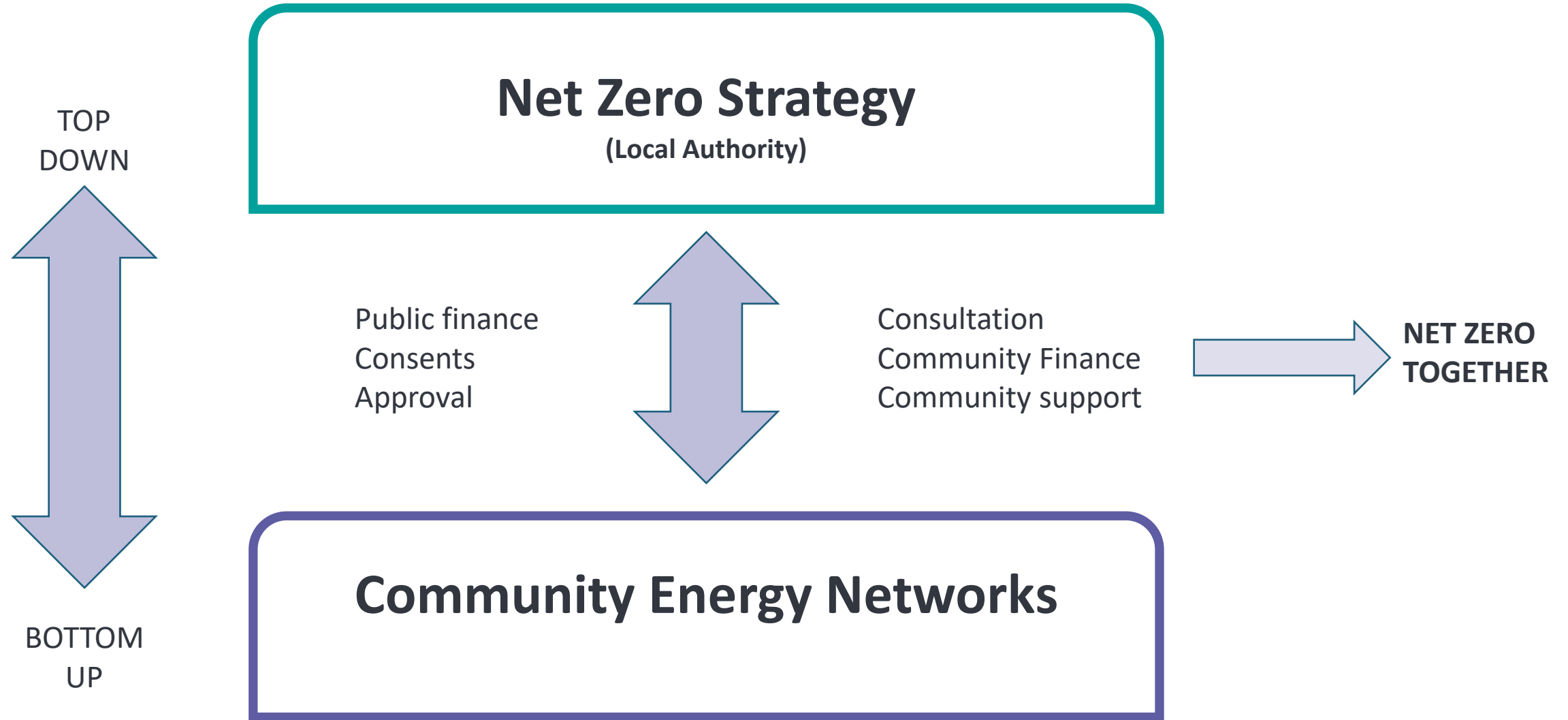
From a community energy perspective, it is an opportunity to build capacity in Leicestershire

Looking to adopt the **Community Energy Pathways** programme which has been developed by Community Energy South

An innovative green energy scheme bringing local authorities and communities together to support the delivery of Net Zero targets



Achieving Net Zero



We would like to hear from you

