

LCC Environment & Transport Update

Ann Carruthers

The department continues to struggle with on-going resourcing issues across many of the services within Highways and Transportation, including the Passenger and Fleet team and the Traffic and Signals team, as well as technicians in the waste sites. We continue to monitor the situation and take action as appropriate but on-going pressures remain across these service areas.

Recruitment opportunities:

The vacancies that we are hoping to fill are those that make a real difference to the services we provide, if you know of anyone that is interested please encourage them to apply. Roles such as:

- Recycling and Waste Site technicians
- Waste Station Transfer plant operatives
- Minibus Drivers and Passenger Escorts (SEN transport)
- Passenger Transport Coordinators
- Tree Surgeons
- Street Lighting Engineers
- Grass cutting operatives



- Balance budget expected for 2023/24 (subject to £18m savings delivery)
- Funding gap of £13m expected for 2024/25 rising to £88m by 2026/27
- E&T revenue budget accounts for 22% of the authority's total service revenue budget of £430m in 2023/24
- Current savings requirement just over £7m by 2026/27, of which just under £4m has been identified for delivery in the MTFS
- Heightened focus on service reductions to bridge the gap
- Inflation looking likely to stay higher for longer, this will increase the scale of the financial challenge



- The county council was awarded £1.78m BSIP+ funding in the current financial year as part of a Department for Transport (DfT) settlement to more than 60 local transport authorities in the country, reflecting the difficult move for bus operators.
- In view of this the review of services which the County Council subsidises has been paused in order to better align our policy with the Government's aspirations.
- This will not mean that the funding will be used for the re-installment of commercial bus services already withdrawn.
- The review will commence late 2023 into spring 2024 with a consultation on any planned changes with local Members and the affected community.
- Please encourage the community to make use of the DfT's current £2 fare cap which has now been extended to the end of October 2023 when it will rise to £2.50 for the rest of the year into 2024.

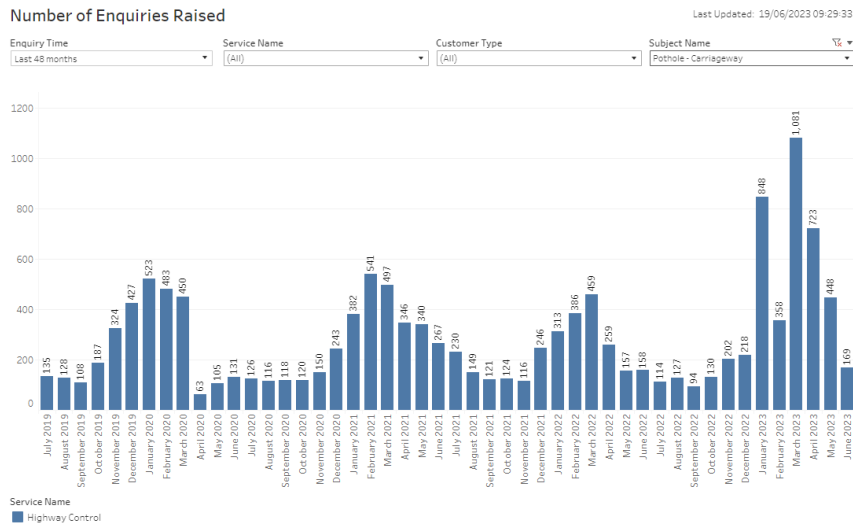


- There are no current plans to change the service or resource levels
- Grass growth levels usually peak around May, subject to weather conditions, and then June and July see a reduction in growth. The diagram shows average growth
- The urban grass cutting programme commenced on 11th April, the third cut is in progress. The first rural cut, to visibility splays is also complete. The second rural cut (visibility splays and a single swathe) started on 30th May. Staff resourcing issues has led to delays in strimming along jitties and some areas of cutting being missed by temporary staff. The Council has engaged the support of external resources to catch up on the strimming of jitties



- The first countywide weed spraying treatment commenced on 12th June. This is done twice a year to arrest and control growth but is not designed to achieve weed free roads year round. The schedule for this and grass cutting is available on the [LCC website](#)

- The additional money for potholes announced in this year’s budget has been distributed across the 4-year MTFS period with the net effect of keeping the budget the same as the last financial year. However, inflation and increasing cost of materials means our buying power is continually reducing.
- Together with the fact that the condition of the network is deteriorating faster which means that more potholes are needing to be repaired in a shorter space of time.
- The winter peak for pothole enquiries (October to May) has seen almost twice as many pothole enquiries this year from customers, compared to the same time over the previous 3 years.



Period	Customer Pothole Enquiries
Oct 2019 – May 2020	2562
Oct 2020 – May 2021	2619
Oct 2021 – May 2022	2060
Oct 2022 – May 2023	4008

- Kibworth site re-opened after major redevelopment in March 2023
- Along with Loughborough, the site at Whetstone is now a drop off point for community medical aids, which can be recycled/reused
- Please continue to check the website before visiting a waste site due to unplanned closures due to shortage of staff, weather events or incidents
- Staff shortages continue to be an issue at waste sites but there is a recruitment drive ongoing for these roles



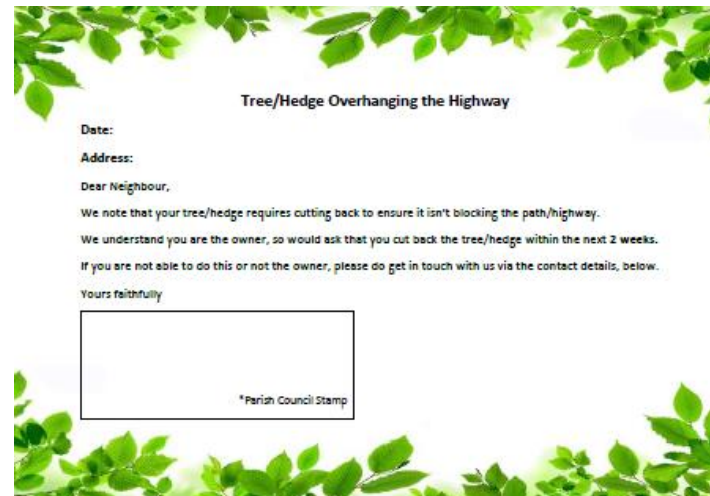
Parish Operational Clerks Meetings

- Regular officer attendance (Special Projects)
- Proactive and timely E&T updates
- Responding to Clerk issues

Parish Pilot

Working alongside Parishes and Community Groups to support and improve service delivery, e.g. PROW maintenance, Banks Man, trusted reporter, procurement, replacing signage.

- Workshops to be set up shortly
- Data asset sharing trial – now live
- Vegetation Post Card trial – ready to go live



Tree/Hedge Overhanging the Highway

Date:

Address:

Dear Neighbour,

We note that your tree/hedge requires cutting back to ensure it isn't blocking the path/highway.

We understand you are the owner, so would ask that you cut back the tree/hedge within the next 2 weeks.

If you are not able to do this or not the owner, please do get in touch with us via the contact details, below.

Yours faithfully

* Parish Council Stamp

Members Highways Fund - update



**830
requests
handled**

**28
Gateway
treatments
installed**

**70 VAS &
MVAS
schemes
delivered**

**£120,000
Grants
Transferred
so far**

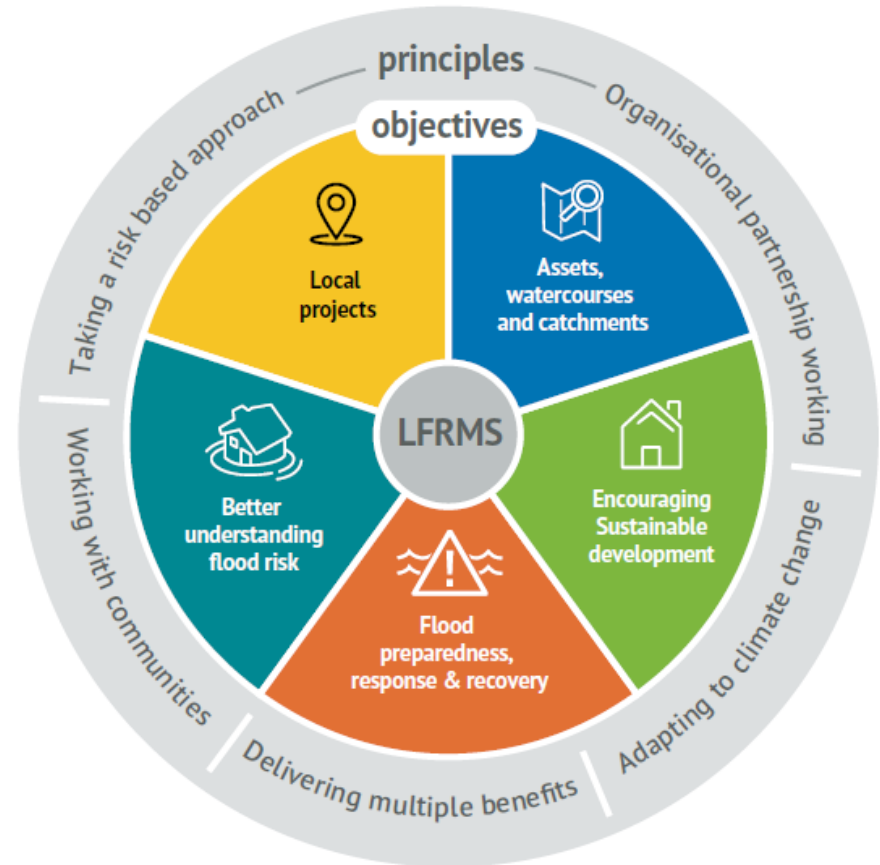
- The County Council has a need to address carbon savings and financial challenges
- Proposals to reduce street lighting from 50% to 30% brightness from 8pm daily (currently reduces to 30% at 10pm)
- This change would save 315 tonnes of carbon emissions and approximately £500,000 in energy costs
- If approved, changes would come into effect in January 2024
- Engagement seeks to better understand impact and potential exceptions





Have your say on **Local Flood Risk Management**

until **Midnight on Sunday 13th August 2023.**



The County Council **declared a climate emergency in 2019.**

We plan to achieve **net zero for our own operations by 2030**, having already reduced emissions by over 70% since 2008-09.

We are also committed to working with others to achieve **net zero in Leicestershire by 2045.**

To facilitate this, we commissioned research into the county's baseline emissions, pathways to net zero and developed the Net Zero Leicestershire Strategy and Action Plan.

We held a 12-week consultation open from May to July 2022, where we sought feedback from 1400 stakeholders. We received 593 main survey, 570 youth survey responses, plus feedback from workshops and events.

Visit our Net Zero Leicestershire Webpages for more information:

<https://www.leicestershire.gov.uk/environment-and-planning/net-zero>



Based on the Glasgow Climate Pact, signed by all parties (197 countries) at COP26, which commits to:

- reduce emissions,
- help those impacted by climate change,
- enable countries to deliver their climate goals, and
- work together to deliver even greater action

The Leicestershire Climate and Nature Pact recognises the urgent need for local action at pace and scale to support delivery of these ambitious commitments

Also recognises the ecological emergency and interconnected crises model

A true partnership effort, bringing together the businesses, voluntary, community and social enterprises, universities, education and research sector, public sector and people of Leicestershire to work towards these common goals



Our Climate and Nature Pact launch partners...



Bottesford Net Zero



Halstead Hill Farm



Hinckley & Bosworth Borough Council



Requests from Town and Parish Councils in delivering Net Zero:

- Sharing best practice
- Networking Opportunities
- Easy to Understand Information
- Support for volunteers



Existing initiatives and Support

- Tree Survey and Management
- Wild flower Verge Scheme
- Waste Action Volunteers/Environmental Action Volunteers/Tree Wardens
- Waste initiatives – talks, events, nappy packs, cooking classes
- Environmental Matters Newsletter
- Electric Vehicle Car Club Pilots (Green Fox)
- Free Tree Schemes
- Community Response Plans/Community Flood Wardens
- Leicestershire Climate and Nature Pact
- Parishes Nature Network
- Biodiversity Training



Following discussions with the Green Living Leicestershire (GLL) Partnership, we felt the first thing that was needed was a toolkit for Town, Parish Councils and Community Groups.

The aim of the toolkit:

- Create a central place for Local Councils and Community Groups to find information/advice/guidance on climate change/net zero action
- Promote existing schemes and support, locally and nationally
- Supporting groups to start, or further their net zero activities
- Give practical tips and advice to encourage and support residents and businesses to adopt lower carbon practices
- Share examples of good practice within Leicestershire
- Encourage Local Councils to sign up to the Climate & Nature Pact



The toolkit has been developed by LCC Environment Team and LCC Communities Team and overseen by the 'Green Living Leicestershire' partnership. GLL is a collaborative partnership between the county council and districts/borough councils, to deliver net zero related action.

The LRALC and a number of Parish Clerks have also contributed to its development.

The toolkit brings together content from:

- The Leicestershire Climate and Nature Pact
- NALC webpages and resources
- Net Zero Leicestershire Strategy and Action Plan
- Friends of the Earth
- Centre for Sustainable Energy



It combines information about Leicestershire's Carbon Footprint, tools and ideas for taking action, and some case studies from across the County

The toolkit is supported by a '[Net Zero Webpage](#)' which will be updated with new information, guidance and best practice examples.



Purpose

We need to act quickly to reduce carbon emissions to net zero, adapt to the impacts of climate change and halt ecological decline. The success of this depends on Leicestershire residents, communities, businesses, local authorities and other organisations in the county all working together.

This toolkit aims to provide a starting point for town, parish councils and community groups to address net zero in their local community. It has been developed in partnership with Green Living Leicestershire and aligns to the Leicestershire Climate and Nature Pact.

- We anticipate the toolkit helping to:
- Supporting you in starting or furthering your net zero activities
 - Give practical tips and advice to encourage and support local residents and businesses to adopt lower carbon practices
 - Share examples of good practice within Leicestershire



Climate change action in Leicestershire

Leicestershire County Council has committed to working with Leicestershire people and organisations to become a net zero county by 2045 or before and has taken significant steps towards this by launching the Net Zero Leicestershire Strategy and Action Plan in December 2022. Furthermore, many District and Borough authorities have implemented their own plans and policies to support climate action in their local areas.

To achieve net zero, we must all play our part and work together to make a difference. The Leicestershire Climate and Nature Pact facilitates this, based on the principles of the Glasgow Climate Pact, by playing a crucial role in fostering collaboration among various stakeholders and has an ever-growing number of organisations and local groups signing up to it.

This collective effort brings together businesses, voluntary organisations, community groups, universities, the public sector, and the people of Leicestershire. The pact aims to achieve a shared objective:

“Leicestershire will end its contribution to global warming and adapt to the impacts of climate change. The transition to net zero will create a cleaner, greener Leicestershire for people, prosperity, and planet; supporting healthy, resilient communities, enabling sustainable growth, and enhancing biodiversity.”



Remembrance Day Events 2023

- To apply for a road closure contact eventsnetworkmanagement@leics.gov.uk (by 15th September)
- Poppy decorations can be added to Street lighting columns without a licence.



Christmas lights

- S178 licence is required to install Christmas or Seasonal lights onto street lighting columns.
- Guidance and online application can be found on our website.
[Guidance](#) [Application form](#) [Timescales](#)

